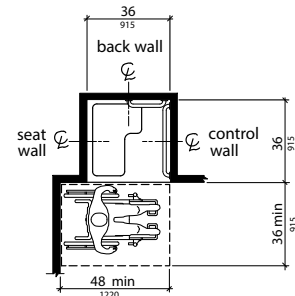
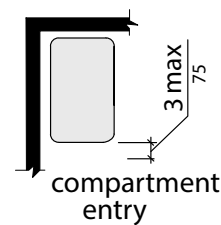
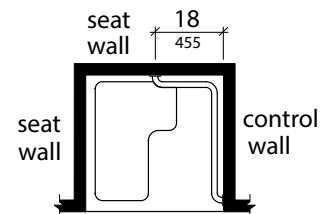


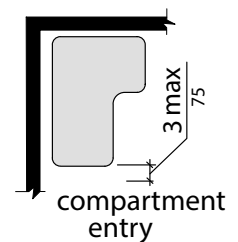
ADA Code Transfer and Roll-In Shower



Note: inside finished dimensions measured at the center points of opposing sides

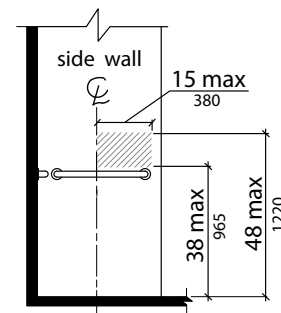
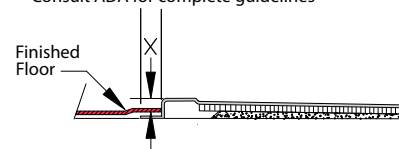


(a) rectangular



(b) L-shaped

X = For ADA | |
1/2" Max - 36" Transfer Showers
* Consult ADA for complete guidelines



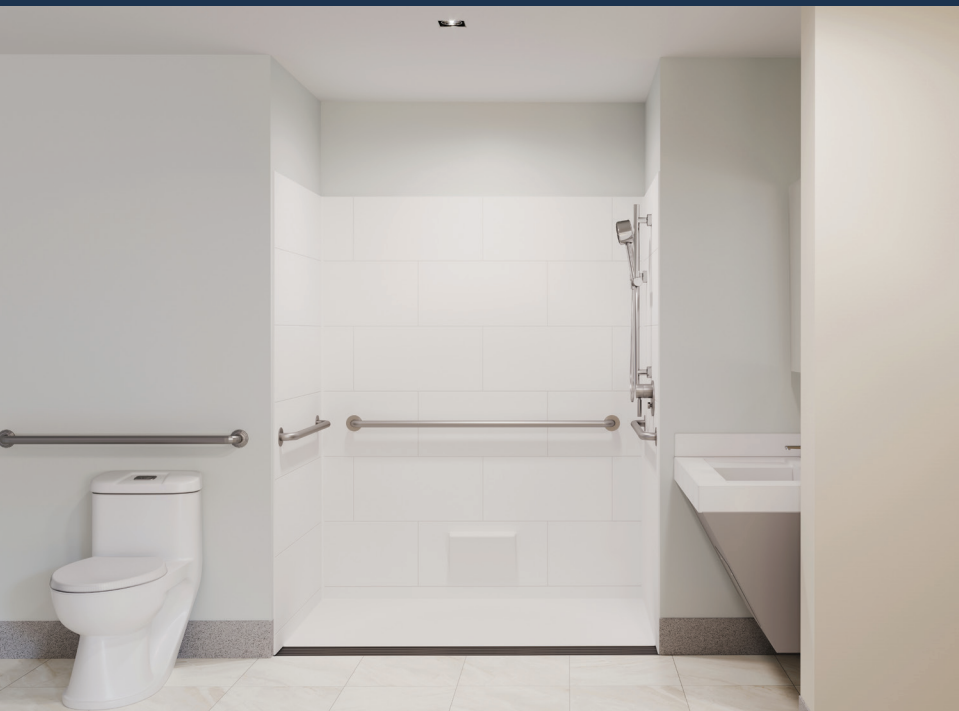
TRANSFER SHOWER

- Transfer Showers must be **exactly 36"x36" inside dimension**.
- They must have clear floor space that allows a parallel approach. This includes a minimum of 36" wide and 48" in length from the control wall.
- Grab bars (250 lb load rated) shall be provided across the control wall and back wall to a point 18 inches from the control wall and be 1 1/4" to 1 1/2" diameter.

SEAT MUST

- Extend from the back wall to a point within 3 inches of the compartment entry (the **finished wall**). This means that showers without return flanges cannot be recessed into the pocket.
- Be mounted so that top of seat is 17" minimum and 19" maximum above the **bathroom finish floor**.
- Thresholds 1/2" inch high **maximum** must be beveled, rounded or vertical.
- Controls (controls, faucets and shower spray units) must be installed on the side wall **opposite the seat** 38" minimum and 48" maximum above the shower floor **AND** 15" maximum from the centerline towards the shower opening.

ADA Code Transfer and Roll-In Shower



ROLL-IN SHOWER

- Roll-in Showers must be a minimum 30" wide and 60" deep **inside dimension**.
- They must have clear floor space at least 30" by 60" in the area adjacent to the shower.
- Grab bar placement **is dependent on** whether you **have a seat** or **no seat**.

WITH SEAT grab bars on the back wall and side wall opposite seat.

WITHOUT SEAT grab bars on the back wall and both side walls.

- Grab bars must be 250 lb load rated and 1 1/4" to 1 1/2" diameter.
- Thresholds may vertical or beveled. Height **maximum** is 1/4" on **vertical entry** and 1/4" vertical with 1/2" rise on **beveled entry** (Change of Level).
- Controls placement is **dependent on** whether you **have a seat** or **no seat**. In both cases they must be located above the grab bar, but no higher than 48" above the shower floor.

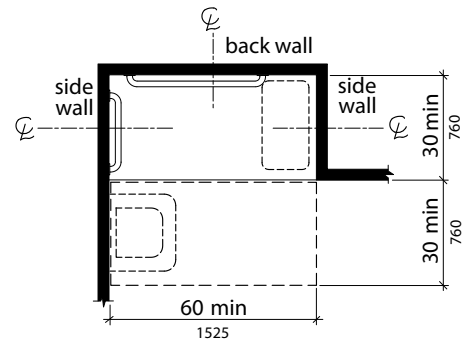
WITH SEAT controls installed on the **back wall adjacent to the seat** 27" maximum from the seat wall.

WITHOUT SEAT controls may be installed on any wall.

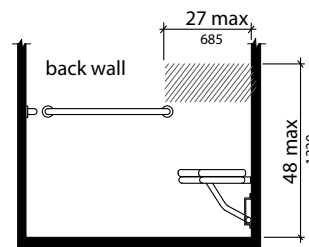
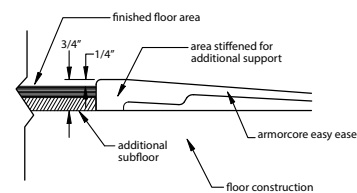
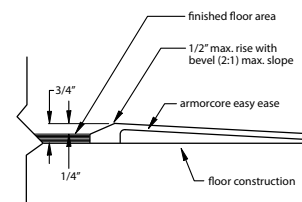
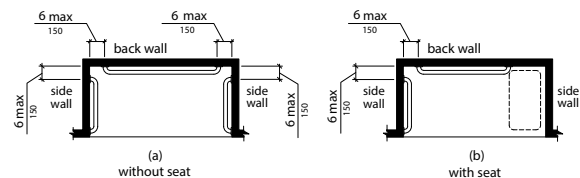
* Please check all state and local codes for any additions or modifications. *



WITHOUT SEAT controls may be installed on any wall



Note: inside finished dimensions measured at the center points of opposing sides



(by) with seat